

Subject: Setup Univers EMS and HiSolar App for your System

Revision History

Version 4.0 – April 2026 - Initial release

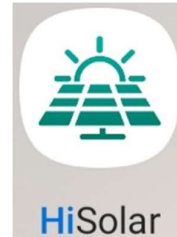
Applicable products and models
EESOLAR Inverters and batteries

For setting up and monitoring Entelar Energy hardware, you will need to use two different apps:

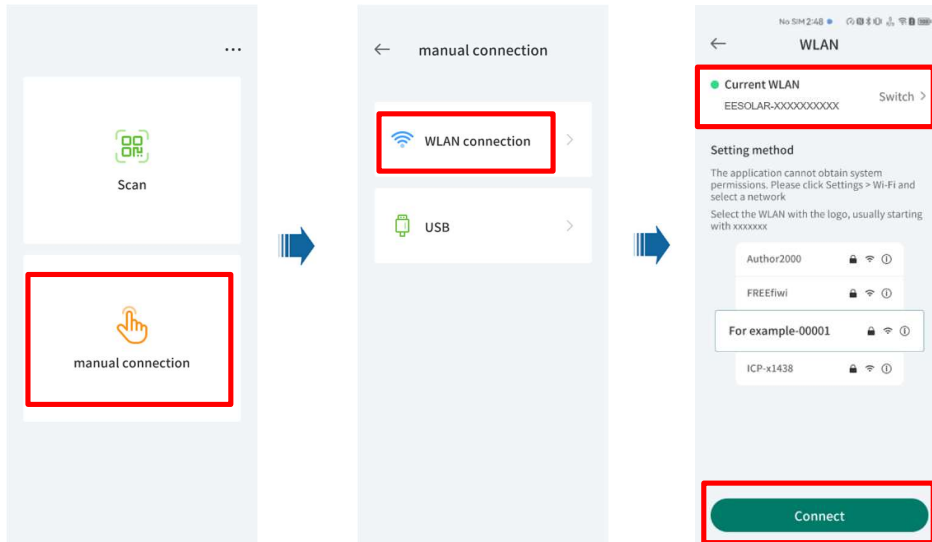
- **HiSolar** – used to set up (commission) the devices
- **Univers** – used to monitor the system

Commissioning the devices-HiSolar App

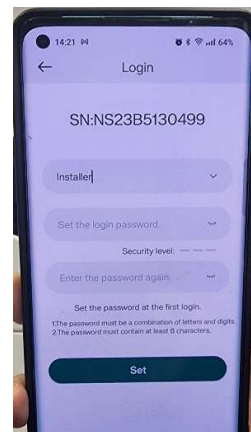
1. Download the HiSolar APP for recommissioning.
Android <https://play.google.com/store/apps/details?id=com.solar.py>
IOS <https://apps.apple.com/us/app/hisolar/id6447599228>



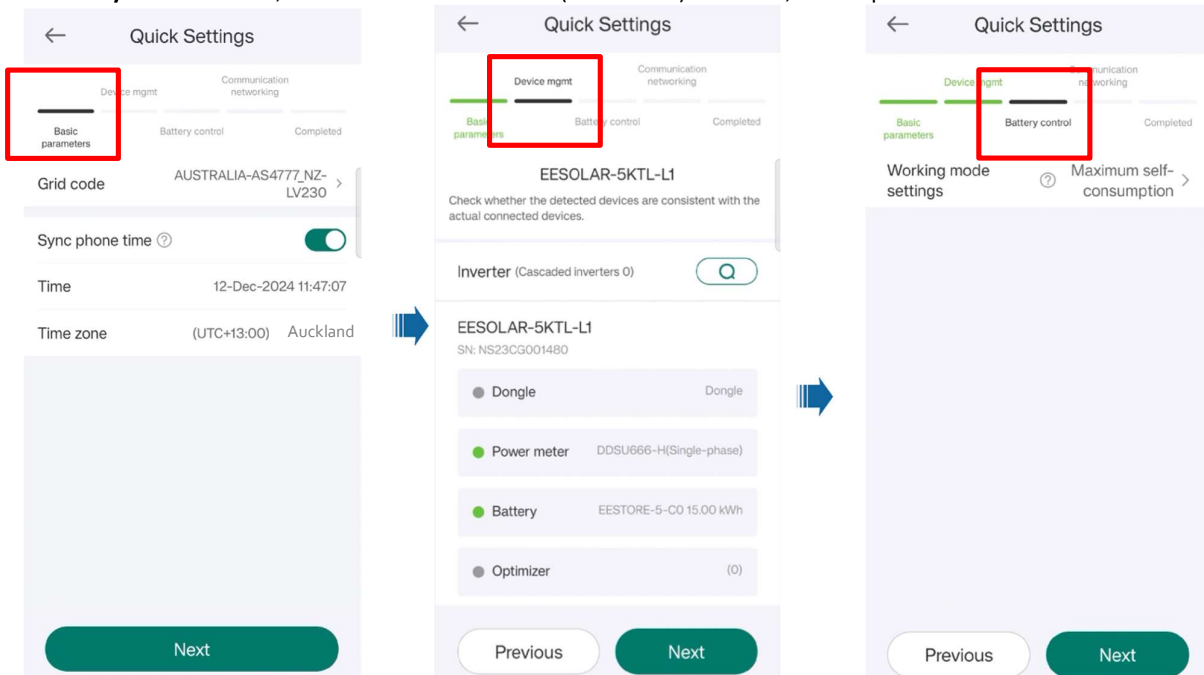
2. Stand next to the inverter and log in to the HiSolar app. Tap **Manual Connection**, then choose **WLAN connection**. Select the inverter's Wi-Fi hotspot as the current network. The hotspot name is the inverter's serial number, and the password is printed on the right-hand side of the inverter.



3. Set up your installer password.



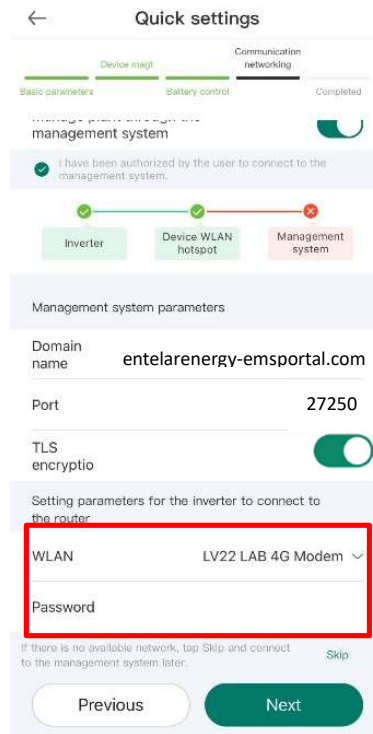
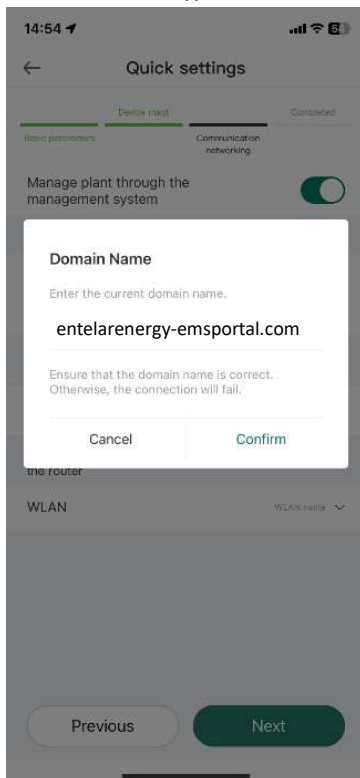
- After logging in, select **Quick Settings**. In **Basic parameters**, set the **Grid code** to AUSTRALIA-AS4777_NZ-LV230. Enable **Sync Phone Time**, then choose the timezone (UTC+13:00) Auckland, then tap **Next**.



- In **Device Management**, make sure all connected devices show a green dot. If any do not, check your wiring. If you have cascaded inverters, tap **Search**. If no optimizers are installed, you can skip the optimizer search step. Then tap **Next**.
- In **Battery Control**, keep the **Working Mode** set to **Maximum Self-Consumption**. You can change this later in Unvers if the system owner has different requirements. Then tap **Next**.
- In **Communication Networking**:

Scenario 1: For inverter with WLAN-FE dongle

- Domain Name: entelarenergy-emsportal.com or 20.199.96.147
- Port Number: 27250
- TLS Encryption: Enabled



Enter the local router Wi-Fi.

Scenario 2: **For inverter without dongle or with 4G Dongle**

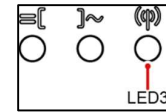
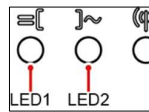
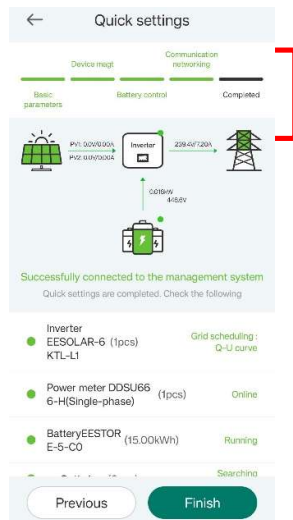
- Domain Name: **entelarenergy-emsportal.com** or **20.199.96.147**
- Port Number: **27251**
- TLS Encryption: **Disabled**
- Enter the local router Wi-Fi.

*Scenario detail as below:

Scenario	Port Code	TLS Encryption
L1 without dongle	27251	Disabled
L1 with WLAN Dongle (EEDongleA-05)	27250	Enabled
L1 with 4G Dongle (SDongleB-06-AU)	27251	Disabled
M1/M3 with WLAN Dongle (EEDongleA-05)	27250	Enabled
M1/M3 with 4G Dongle (SDongleB-06-AU)	27251	Disabled

8. Once Quick Settings is completed, you should see the energy flow diagram and all devices online. Check the inverter indicators:

- DC (LED1) and AC (LED2) should be solid green or blinking slowly for more than 3 minutes
- The Communication indicator (LED3) should be blinking green

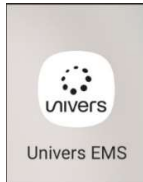


*Hint: Take a screenshot of the **Completed** page. This can help the Entelar support team diagnose any issues if the process doesn't go smoothly.

9. Now that you've completed all the commissioning settings for the inverter, you can create a plant in Unvers so both you and the system owner can access it remotely.

Monitoring Platform – Univers EMS (Entelar):

1. Download Univers app for parameter setting & monitoring.



Android:

<https://play.google.com/store/apps/details?id=com.enos.mobile.newenergy.hossain&pli=1>

IOS:

<https://apps.apple.com/us/app/univers-ems/id6450944236>

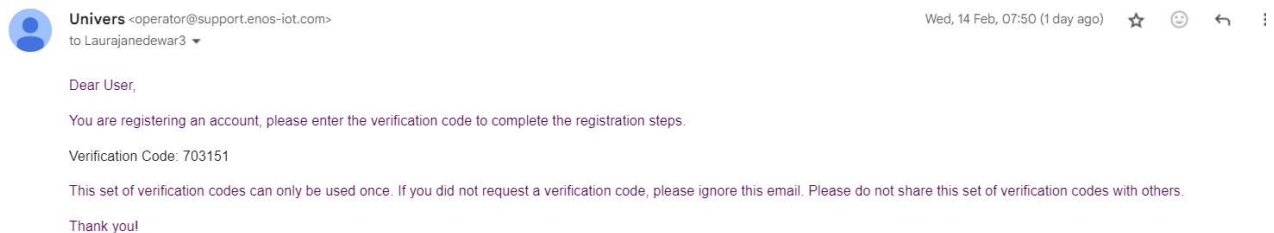
2. Set up your account by clicking ‘Self-Registration’.

- For installer admin the Entelar Energy Company Invitation Code is ‘**EESOLAR2026**’
- For installer, please reach out to your installer admin for your company’s invitation code.

The registration process consists of three main steps:

- Installer Registration:** A form where users enter their company invitation code, username, password, confirm password, user email, and verification code. A red box highlights the **Register** button.
- Login:** A screen where users enter their username and password to log in. A **Login** button is present.
- Select Role:** A screen where users choose their role: **I'm an Installer Admin** (Company and User Management, Plant and Device Management) or **I'm an Installer** (Setup Plant and Onboarding Device, Set Home User, Plant and Device Management). Both options have a **Tap to create your account** instruction.

You will receive a verification code, example of this below:



If you do not receive the Email verification code, kindly check your spam / junk folder.

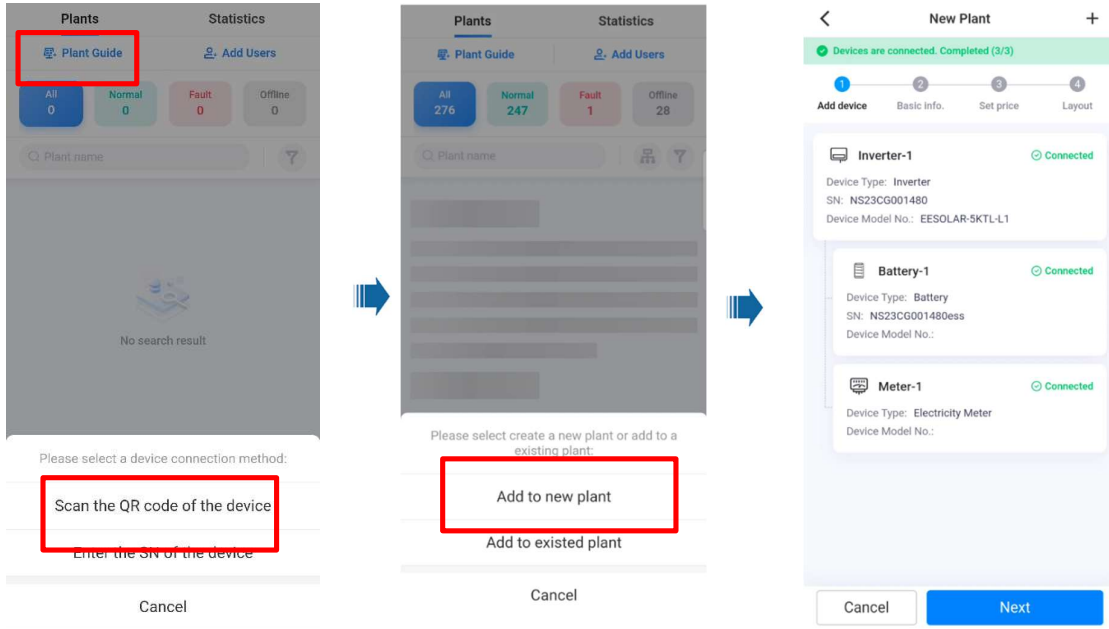
Any difficulties with the registration process please do not hesitate to reach out to:

entelarenergyhelpdesk@entelargroup.co.nz

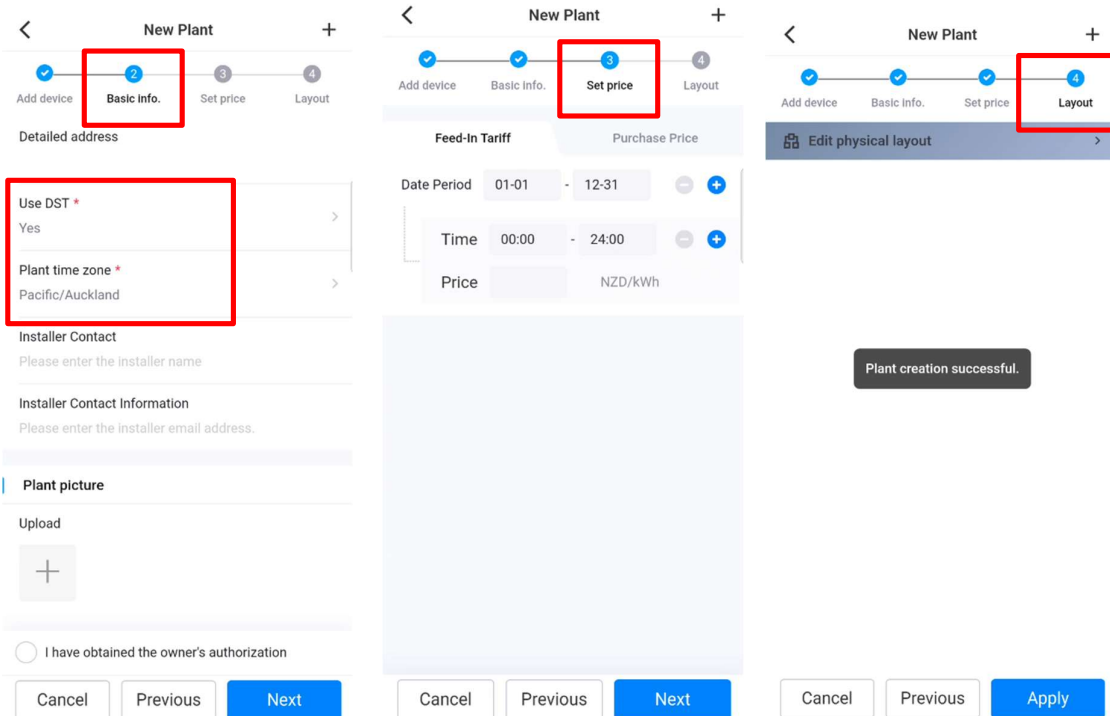
Or call

0800 835 3447

- After completing the commissioning steps in HiSolar, log in to Unifers to add the plant. Tap **Plant Guide**, then scan the QR code on the right-hand side of the inverter. Select **Add to New Plant**. All devices shown in HiSolar should appear and be connected. Then tap **Next**.

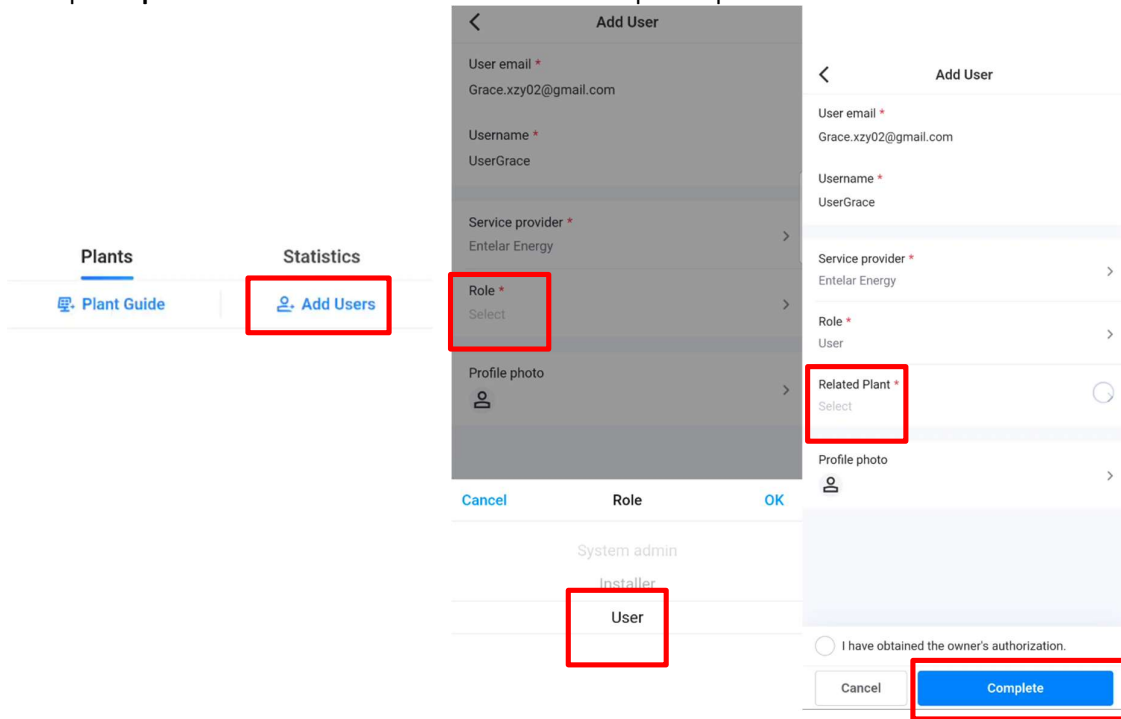


- In **Basic Info**, enter the plant details. Make sure **DST** (Daylight Saving Time) is enabled and set the plant time zone to **Pacific/Auckland** so daylight saving changes won't affect the system. After entering all the information, tap **Next**.



- In **Set Price**, enter the **Purchase Price** and **Feed-in Tariff** from the power company to calculate the plant's revenue. You or the system owner can update this later. Then tap **Next**.

- You can skip the layout step by tapping Apply. A confirmation message will show that the plant has been created successfully. The app will take about 5 minutes to sync all data. Then, you can monitor the plant remotely.
- To add users, tap **Add Users**. Select the Role as User (plant owner) and choose the related plant, then tap **Complete**. The user will receive an email to set up their password.



- You have now completed the basic setup in Univers.

Entelar Energy
Level 3, 46 Sale Street
PO Box 90314
Auckland 1010, New Zealand